

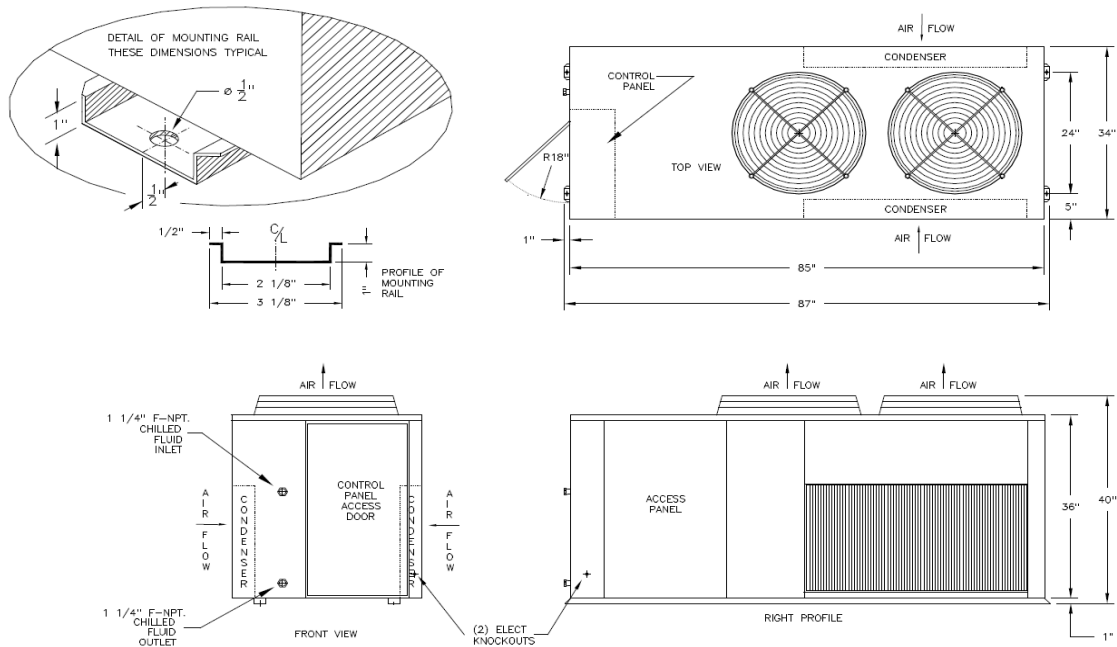


®

PAC90S-ZD

PACKAGED AIR-COOLED 10 HP SINGLE CIRCUIT DIGITAL SCROLL

DIMENSIONAL DRAWINGS



LENGTH	WIDTH	HEIGHT	WEIGHT	FLUID CONNECTIONS
34"	87"	40"	750 LBS	1 1/4" F-NPT

PRODUCT PERFORMANCE INFORMATION

REFRIGERANT	COMPRESSOR OPER. SUCTION TEMP. RANGE	LFT °F	80°F AMB		90°F AMB		95°F AMB		100°F AMB		105°F AMB	
			TONS	EER	TONS	EER	TONS	EER	TONS	EER	TONS	EER
R407C	25°F to 55°F	35	7.6	10.2	7.1	8.8	6.9	8.2	6.7	7.5	6.5	6.9
		45	9.4	12.1	8.9	10.5	8.6	9.7	8.3	9.0	8.1	8.3
		55	11.4	14.0	10.8	12.2	10.5	11.4	10.2	10.6	9.9	9.8
		65	13.6	15.9	12.9	14.0	12.6	13.0	12.3	12.1	11.9	11.3
R404A	-10°F to 45°F	0	4.3	5.8	3.9	4.8	3.7	4.3	3.4	3.9	3.2	3.5
		10	5.3	7.0	4.8	5.8	4.6	5.2	4.3	4.7	4.1	4.3
		25	7.2	8.8	6.6	7.4	6.2	6.7	5.9	6.1	5.6	5.5
		40	9.3	10.6	8.4	8.9	8.0	8.2	7.6	7.5	7.2	6.8
		55	11.6	12.4	10.6	10.5	10.1	9.7	9.5	8.8	9.1	8.1

DRAKE REFRIGERATION INC

2900 SAMUEL DRIVE
 BENSALEM, PA 19020
 (888) 289-7299

www.drakechillers.com

*ALL INFORMATION **FOR REFERENCE ONLY**



PAC90S-ZD

PACKAGED AIR-COOLED 10 HP SINGLE CIRCUIT DIGITAL SCROLL

STANDARD FEATURES

FEATURE	BENEFIT
Listings	ETL 3046941, UL STD 1995, CAN/CSA STD, C22.2 No. 236
MCS Magnum Microprocessor	Johnson N2, BACnet IP, RS485, ethernet capable microprocessor controller
Stainless Steel Brazed Plate Evaporator	Corrosion resistant evaporator wrapped in closed cell insulation
Copeland Digital Scroll Compressor	Industry leader, long lasting compressor with digital technology for precision temperature control
Compressor Crankcase Heater	Prevents compressor damage caused by cold refrigerant on startup
Suction Accumulator	Protects the compressor from damage caused by liquid flood back by preventing liquid from entering the compressor
Water Flow Switch	Protects against process fluid freezing caused by fluid pump failure
Copper Tube/Aluminum Fin Condenser	Rust resistant and high CFM
Painted Galvanized Steel Metal Cabinet	Sturdy, corrosion resistance, professional appearance
Insulated Process Fluid Lines	Maximum thermal efficiency
Factory Tested	Ensures the unit meets the customer's performance designed criteria and arrives in working order
Full Refrigerant Charge	Hassle free and more efficient installation
NEMA 3R Rated Electrical	Indoor/outdoor use

AVAILABLE OPTIONS

OPTIONS	AVAILABLE
Controls	BMS, BAS communications, remote access, monitoring services
Extended Warranty	4 year extended compressor warranty
Electrical	Compressor fusing, phase monitors, disconnects and more
Stainless Steel Pumps	1/3 HP to 25 HP on board pumps in multiple configurations & options
Fluid Piping Upgrades	Flow meters, pressure gauges, low flow bypass valves, and more
Coastal Protection/Hazardous Environments	Heresite coating, "Gold" and Copper condenser coils
Low Ambient Protection	Head pressure control for low ambient temperatures down to -20°F
Other	Casters, service outlets, city water add-ons, heaters, etc.

More options and customization available, contact factory for information: (888) 289 - 7299

AVAILABLE MODEL NUMBER VOLTAGE REFERENCE

T3 (208-230/3/60) --- T4 (460/3/60)

PRODUCT INFORMATION

MODELS AVAILABLE	COMPRESSOR			FAN MOTOR		RLA EA	LRA EA	MCA	MOP	RECIRC. TANK
	MODEL	QTY	HP	QTY	FLA EA					
R407C R404A										
PAC90S3-T3-ZD	ZB76KCE	1	10	2	3.3	41.4	239	60	95	N/A
PAC90S3-T4-ZD					1.6	19.2	125	30	45	
PAC90S6-T3-ZD	ZB76KCE	1	10	2	3.3	41.4	239	60	95	N/A
PAC90S6-T4-ZD					1.6	20	125	30	45	

DRAKE REFRIGERATION INC

2900 SAMUEL DRIVE
 BENSLEM, PA 19020
 (888) 289-7299

www.drakechillers.com

*ALL INFORMATION **FOR REFERENCE ONLY**